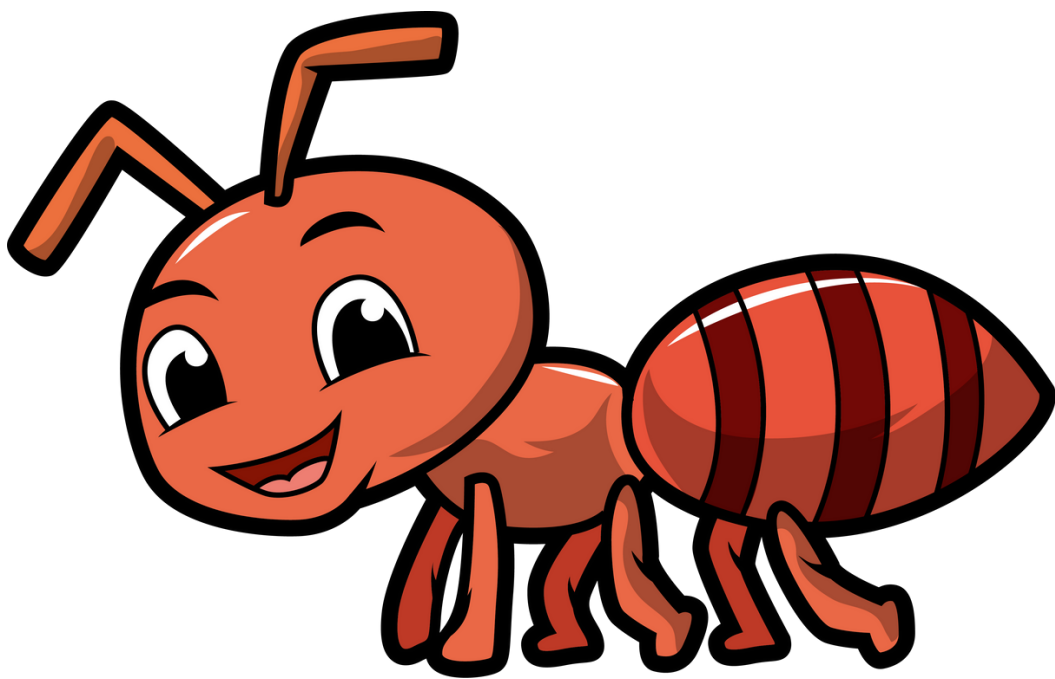


A a



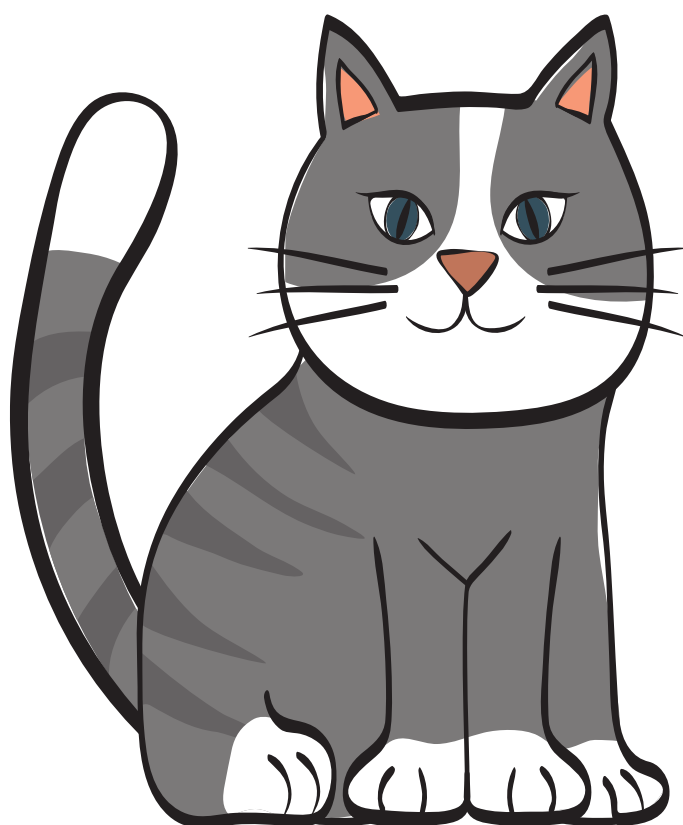
is for ant

Bb



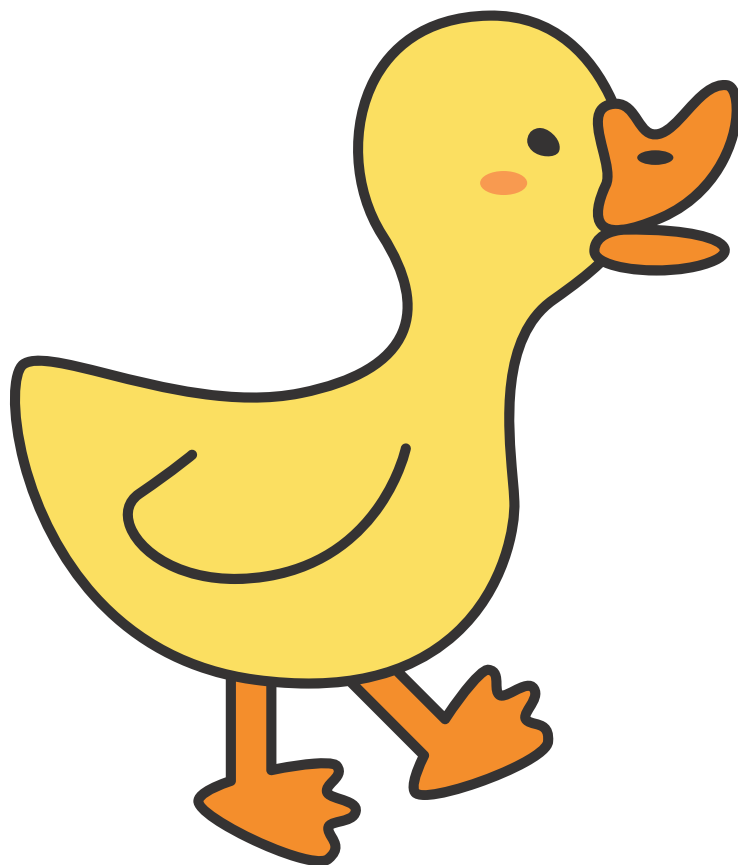
is for bag

Cc



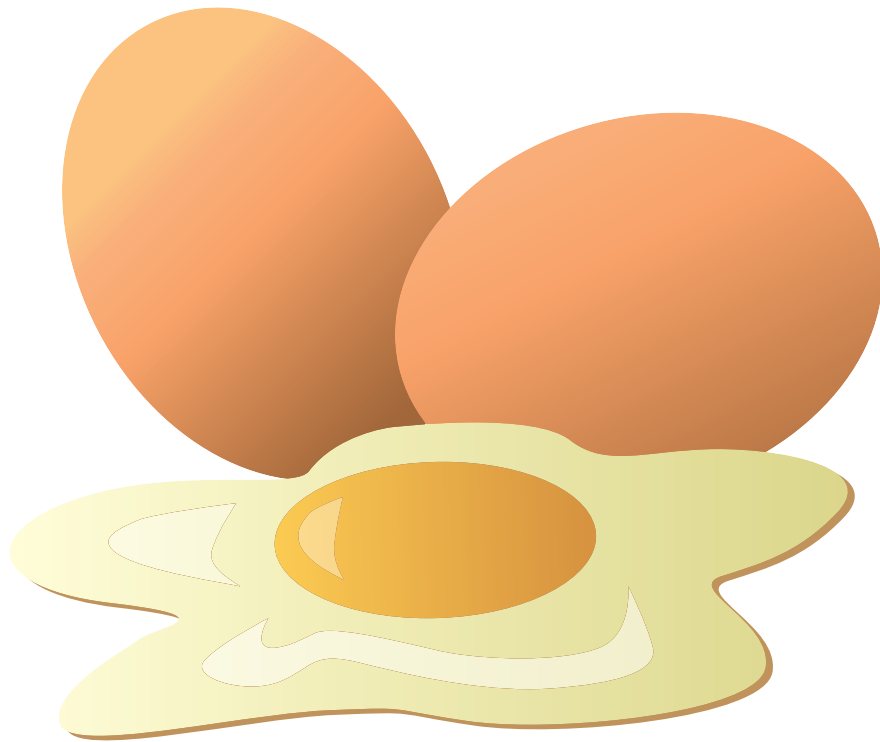
is for cat

D d



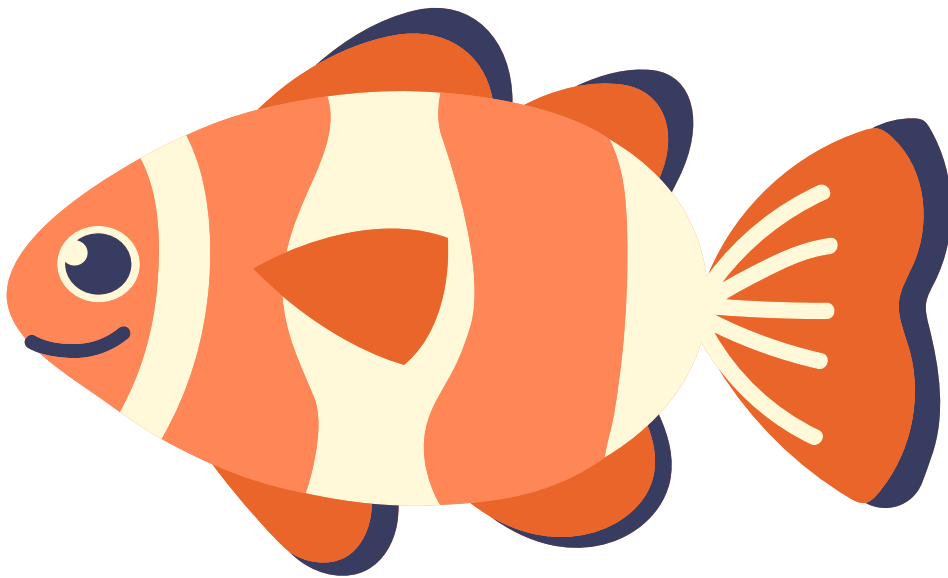
is for duck

Ee



is for egg

Ff



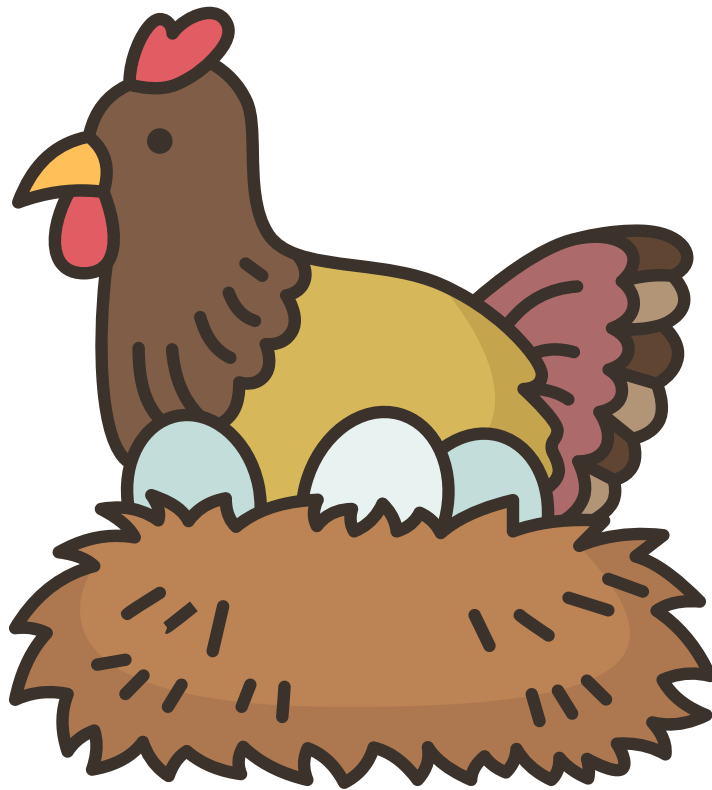
is for fish

Gg



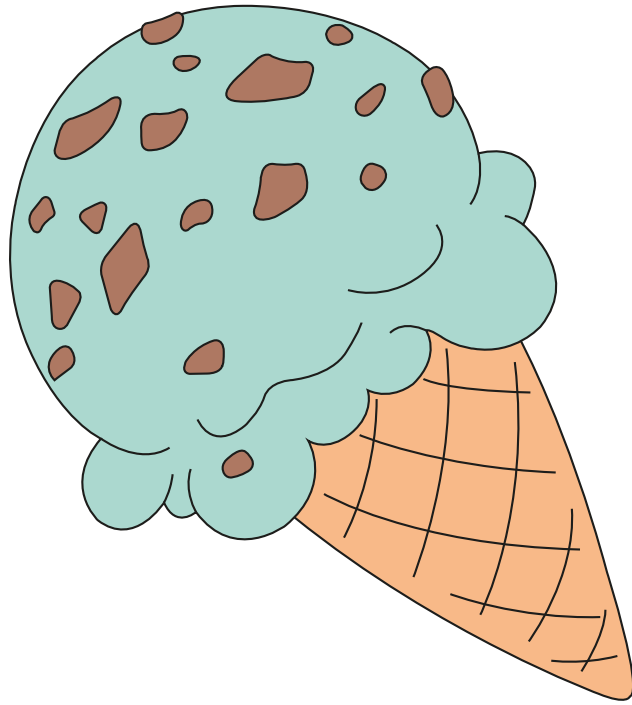
is for guitar

Hh



is for hen

i i



is for ice cream

Jj



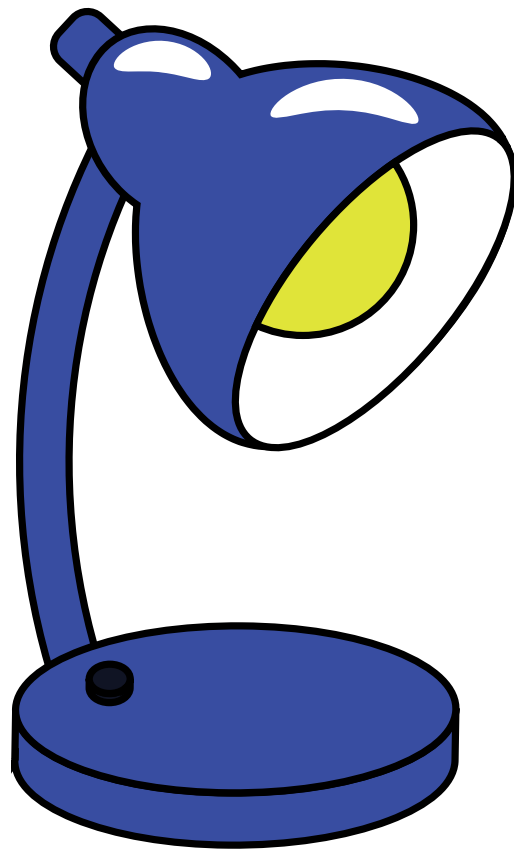
is for jug

Kk



is for kettle

L I



is for lamp

Mm



is for monkey

Nn



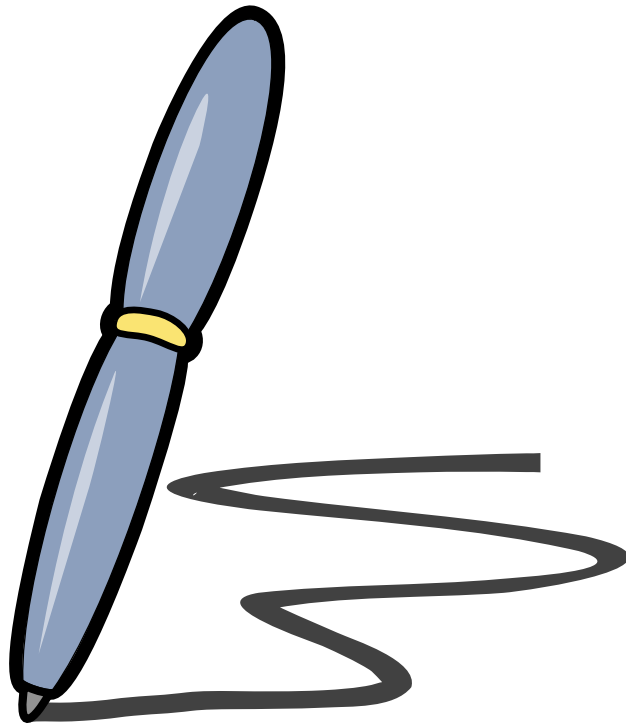
is for nest

O o



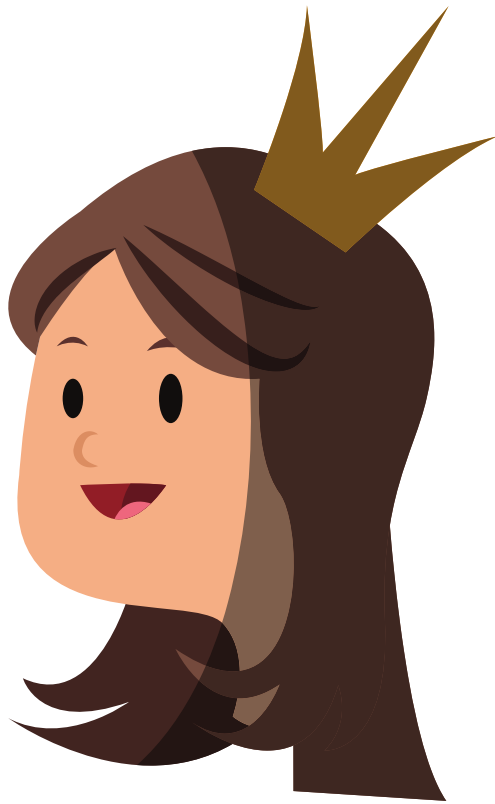
is for owl

Pp



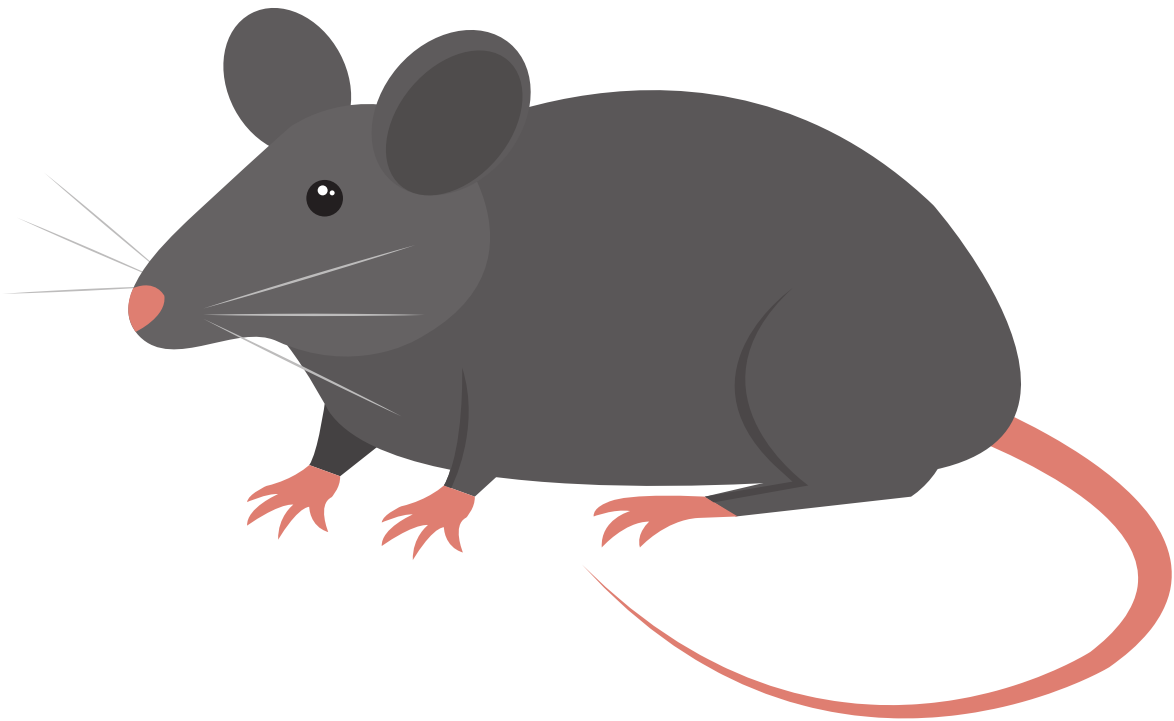
is for pen

Qq



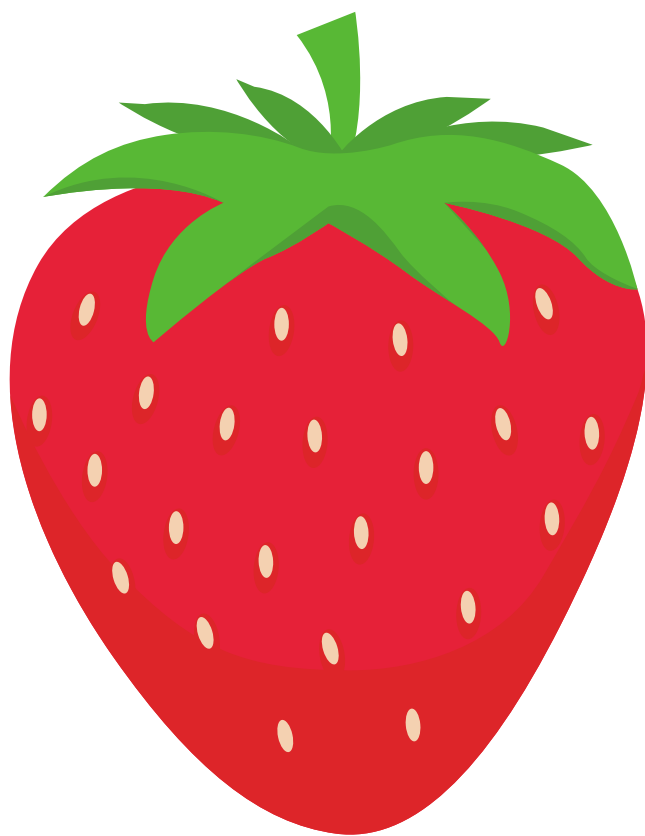
is for queen

Rr



is for rat

Ss



is for strawberry

T t



is for tree

Uu



is for umbrella

V v



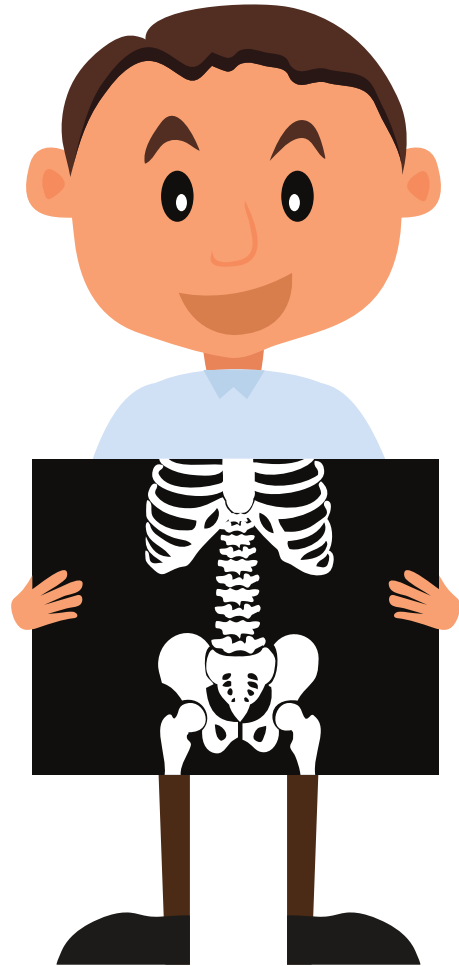
is for van

Ww



is for wheel

Xx



is for x-ray

Yy



is for yak

Zz



is for zip